



WOOLLY WALLACE

Cross Stitch Chart

DESIGN SIZE (W x H):

Stitches: 59 x 65

Size: 10cm x 12.5cm / 3.93in x 4.92in

WHAT YOU'LL NEED: -

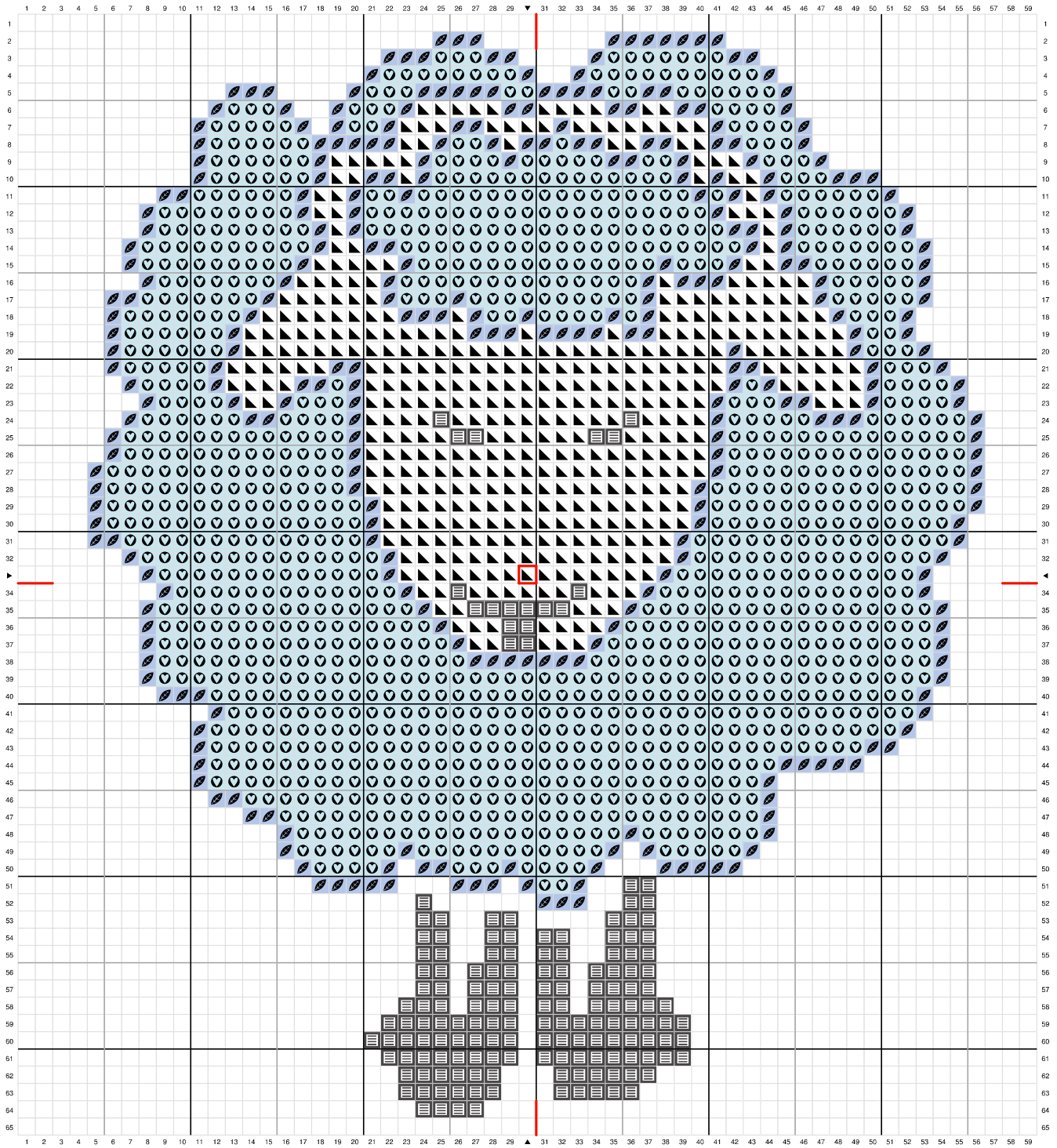
- 14-Count Aida
- Size 24 Cross Stitch Needle
- DMC Stranded Cottons (Listed underneath pattern, one skein of each required - use TWO strands of thread for stitching)
- Scissors

OPTIONAL ITEMS: -

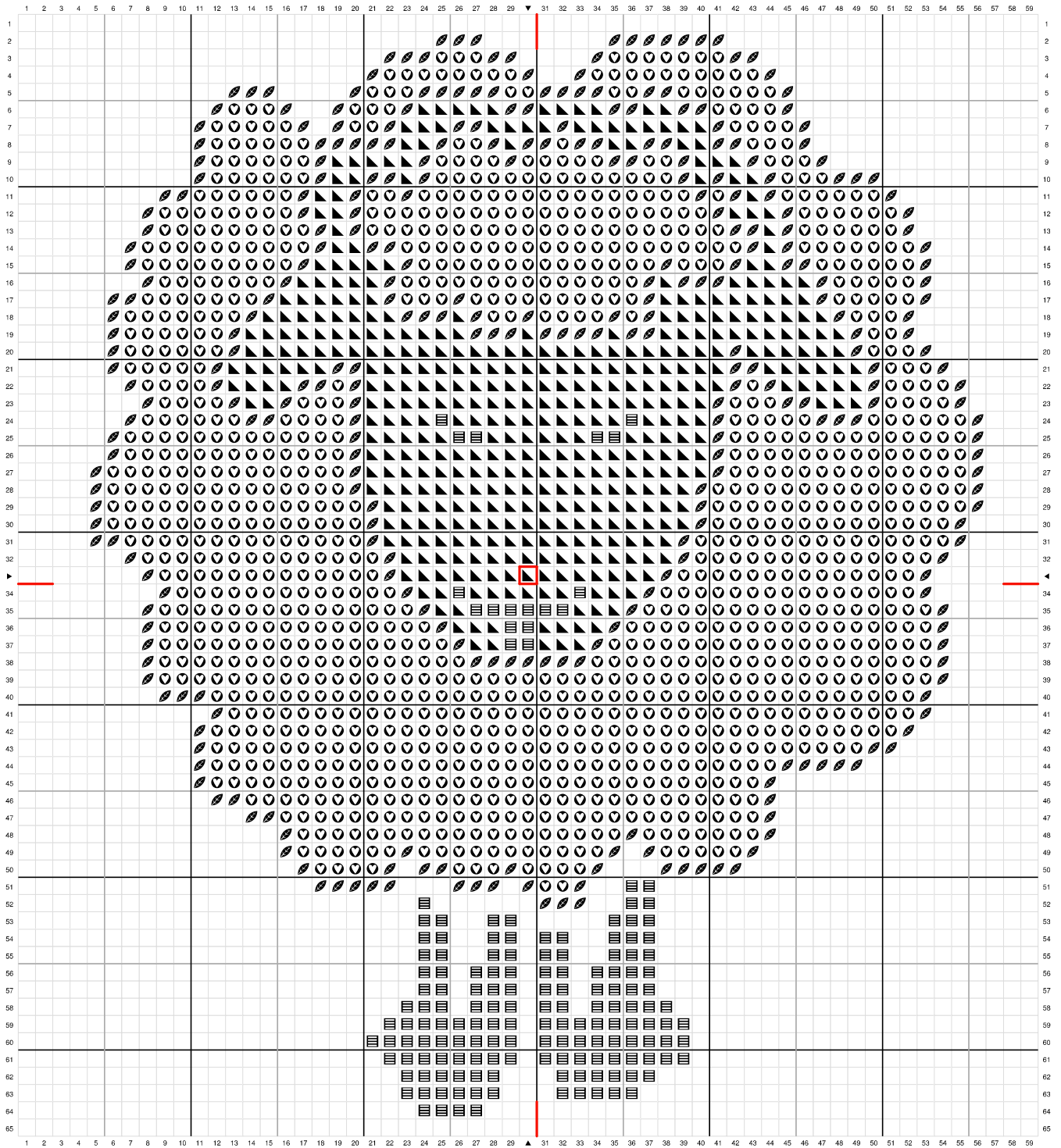
- Embroidery Hoop
- Needle Minder
- Your favourite snack and drink!

For tips on how to get started, be sure to visit our blog.

We also love to see your WIPs and what you're making; post your photos and use #WoolWarehouseCrafters and we'll showcase some of our favourites!



-  DMC 162 - Ultra Very Light Blue
-  DMC 800 - Pale Delft Blue
-  DMC 413 - Dark Pewter Gray
-  DMC B5200 - Snow White



-  DMC 162 - Ultra Very Light Blue
-  DMC 800 - Pale Delft Blue
-  DMC 413 - Dark Pewter Gray
-  DMC B5200 - Snow White